

# 2600T series pressure transmitters

## Model 266JSH/JST Modbus® Multivariable

### Measurement made easy

The most accurate multivariable  
ABB has ever produced



### Overview

#### Base accuracy

- 0.04% of calibrated DP span (266JST)
- 0.05% of calibrated SP span (266JST)
- Dynamic compensation of pressure and temperature changes

**266JSH/JST high-performance transmitter for measuring differential pressure, absolute pressure, and process temperature in a single device**

#### Proven sensor technology together with state-of-the-art digital technology

- Large range down ratio of up to 100:1

#### 2-year stability

- 0.15% of FCS (Factory Calibrated Span)

#### Flexible configuration options

- Local configuration via keys on LCD indicator

#### New TTG (through-the-glass) key technology

- Enables quick and easy local configuration without the need to open the cover – even in potentially explosive environments

# Model 266JSH/JST MODBUS® Multivariable

This intelligent 266 Modbus® transmitter provides the user with precise measurements of differential pressure, absolute pressure, and process temperature (the latter by means of an externally connected Pt100 resistance temperature detector), in a single device. Information is available to any host device that can communicate using Modbus® protocol.

Individual device Modbus® addresses can easily be configured using the optional keypad / display or using the XMV interface application in the ABB Totalflow flow computers or Remote Terminal Unit (RTU) devices. This application creates a “Plug and Play” interface to the multivariable sensor and indicates any active alarms that may be present in easily understood text.

The combination of ABB Totalflow flow computers or RTU devices and one or more ABB 266 Modbus® multivariables makes an ideal solution when multi-tube measurement is required and / or when the transmitters must be located in a hazardous location.

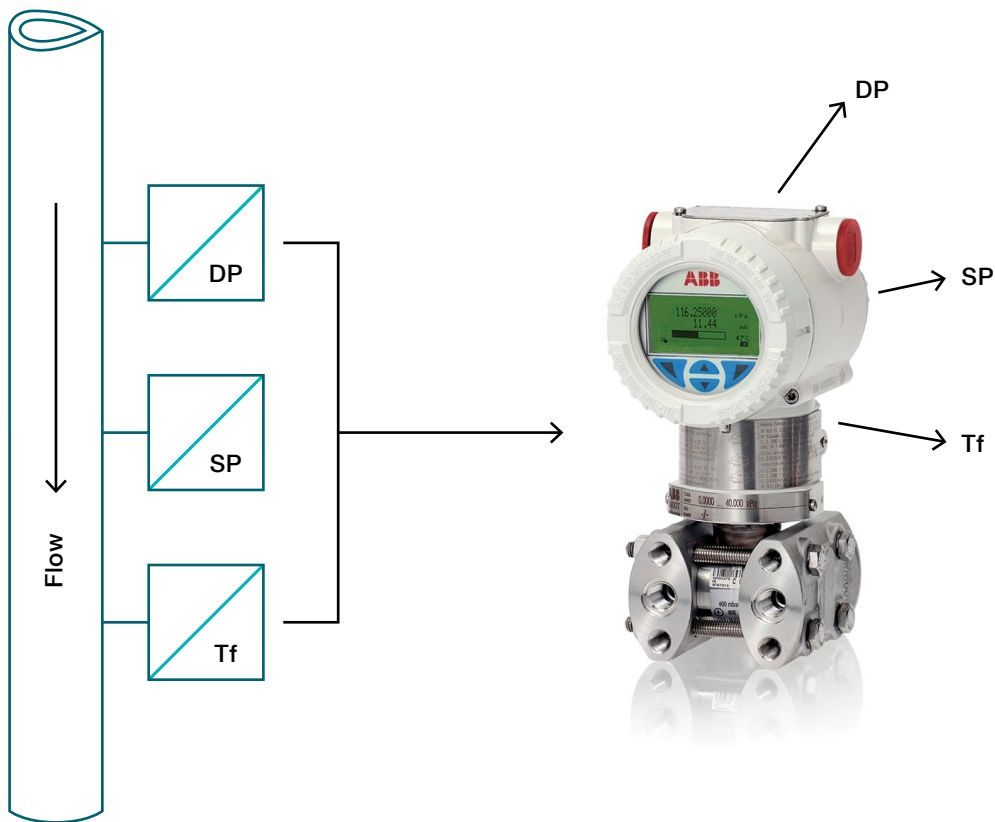


Fig. 1: Input measurement – past and present

## Operating limits

### Pressure limits

#### Overpressure limits

The transmitter models 266JSH/JST can operate without damage within the following overpressure limits:

DP Sensors	Filling fluid	One side overpressure limits
1,2	Silicone oil	0.5kPa abs., 5 mbar abs., 0.07 psia or 3.45 MPa, 34.5 bar, 500 psi or 10.4 MPa, 103.5 bar, 1500 psi or 22 MPa, 220 bar, 3191 psi – depending on code variant selected
5, 6, 7	Silicone oil	17.5kPa abs., 175 mbar abs., 2.5 psia or 3.45 MPa, 34.5 bar, 500 psi or 10 MPa, 100 bar, 1450 psi or 22 MPa, 220 bar, 3191 psi – depending on code variant selected
1,2	Fluorocarbon (Galden)	17.5 kPa abs., 175 mbar abs., 2.5 psia and 2 MPa, 20 bar, 290 psi or 10 MPa, 100 bar, 1450 psi or 22 MPa, 220 bar, 3191 psi – depending on code variant selected
5, 6, 7	Fluorocarbon (Galden)	17.5 kPa abs., 175 mbar abs., 2.5 psia and 0.6 MPa, 6 bar, 87 psi or 2 MPa, 20 bar, 290 psi – depending on code variant selected

#### Static pressure limits

The transmitter models 266JSH/JST can operate within the specifications with the following limits:

DP Sensors	Filling fluid	Static pressure limits
1,2	Silicone oil	3.5kPa abs., 35 mbar abs., 0.5 psia or 3.45 MPa, 34.5 bar, 500 psi or 10.4 MPa, 103.5 bar, 1500 psi or 22 MPa, 220 bar, 3191 psi – depending on code variant selected
1,2	Fluorocarbon (Galden)	17.5kPa abs., 175 mbar abs., 2.5 psia or 3.45 MPa, 34.5 bar, 500 psi or 10 MPa, 100 bar, 1450 psi or 22 MPa, 220 bar, 3191 psi – depending on code variant selected

#### Test pressure

The transmitters can withstand a pressure test with the following line pressure without leaking:

Model	Test pressure
266JSH/JST	1.5 x nominal pressure (static pressure limit) applied to both sides simultaneously <sup>1</sup>

<sup>1</sup> Meets hydrostatic test requirements of ANSI / ISA-S 82.03.

# Model 266JSH/JST MODBUS® Multivariable

## Functional specification

### Communications: Modbus® protocol (RTU)

The transmitter uses 8 bit Modbus® RTU data transmission. Communications is accomplished by 2-wire half-duplex RS485 hardware link.

Baud Rates	Data Bits	Parity Bits	Stop Bits	Total Bits
1200, 2400, 4800, 9600 (default),	8	None	2	Always 11
19200, 38400	8	Odd	1	
	8	Even	1	

### Measuring range limits and span limits

#### Differential pressure sensor

Sensor code	Factory calibrated span (FCS)	Lower range limit (LRL)	Minimum measuring span
1	62.3 kPa	0 kPa	0.623 kPa
	623 mbar	0 mbar	6.23 mbar
	250 inH2O	0 inH2O	2.5 inH2O
2	199.3 kPa	0 kPa	1.993 kPa
	1993 mbar	0 mbar	19.93 mbar
	800 inH2O	0 inH2O	8.0 inH2O

#### Absolute pressure sensor

Sensor code	Factory calibrated span (FCS)	Lower range limit (LRL)	Minimum measuring span
5	3450 kPa	~7 psia, 0.483 bar, 48.3 kPa	138 kPa
	34.5 bar		1.38 bar
	500 psi		20.0 psi
6	10350 kPa	~7 psia, 0.483 bar, 48.3 kPa	414 kPa
	103.5 bar		4.14 bar
	1500 psi		60.0 psi
7	22000 kPa	~7 psia, 0.483 bar, 48.3 kPa	880.0 kPa
	220 bar		8.8 bar
	3000 psi		120.0 psi

### Span limits

Maximum measuring span = FCS (Factory Calibrated Span)

- Minimum DP span =  $.01 \times \text{FCS}$
- Minimum SP span =  $.025 \times \text{FCS}$

### Zero position suppression and elevation

The zero position and span can be set to any value within the measuring range limits listed in the table if:

- set span  $\geq$  lowest span

### Temperature input

Process temperature measurement range  $-80\text{ }^{\circ}\text{F}$  to  $1500\text{ }^{\circ}\text{F}$  ( $-62\text{ }^{\circ}\text{C}$  to  $816\text{ }^{\circ}\text{C}$ ) with resistance temperature detector (Pt100) in 4-wire circuit.

### Insulation resistance

$> 100\text{ M}\Omega$  at  $500\text{ V DC}$  (between terminals and ground)

### Damping

Configurable time constant between 0 and 60 s.

This is in addition to the sensor response time.

See Dynamic Response on page 12.

### Warm-up time

Ready for operation as per specifications in less than 10 s with minimum damping.

### IMPORTANT (NOTE)

To optimize performance characteristics, it is recommended that you select the transmitter sensor code with the lowest turn down ratio.

# Model 266JSH/JST MODBUS® Multivariable

## Temperature limits °F (°C)

### Environment

All models	Ambient temperature limits
Silicone oil	-60 °F to 185 °F (-51 °C and 85 °C)
Fluorocarbon (Galden)	-60 °F to 185 °F (-51 °C and 85 °C)
Integrated digital display (LCD) <sup>1</sup>	-60 °F and 185 °F (-51 °C and 85 °C)
Viton gasket	-4 °F and 185 °F (-20 °C and 85 °C)
PTFE gasket	-4 °F and 185 °F (-20 °C and 85 °C)

<sup>1</sup> Below -4 °F (-20 °C) and above 158 °F (70 °C), it may no longer be possible to read the digital display (LCD) clearly.

### IMPORTANT (NOTE)

For applications in potentially explosive environments, the temperature specified on the certificate / approval applies, dependent upon the degree of protection sought.

### Process

All models	Ambient temperature limits
Silicone oil	-40 °F and 250 °F (-40 °C and 121 °C) <sup>1</sup>
Fluorocarbon (Galden)	-40 °F and 250 °F (-40 °C and 121 °C) <sup>2</sup>
Viton gasket	-4 °F and 250 °F (-20 °C and 121 °C)
PTFE gasket	-4 °F and 185 °F (-20 °C and 85 °C)

<sup>1</sup> 85 °C (185 °F) for applications under 10 kPa, 100 mbar abs., 1.45 psia  
up to 3.5 kPa abs., 35 mbar abs., 0.5 psia

<sup>2</sup> 85 °C (185 °F) for applications below atmospheric pressure up to 17.5 kPa abs.,  
175 mbar abs., 2.5 psia

### Storage environment / condition

Models 266JSH/JST Modbus®	
Storage temperature range	-60 °F and 185 °F (-51 °C and 85 °C)
Relative humidity during storage	Up to 75%
TTG display	-20 °F and 185 °F (-28 °C and 85 °C)

## Environmental limits

### Electromagnetic compatibility (EMC)

#### Emissions

EN55022 and FCC: Class B, (Radiated and conducted)

#### Immunity

Meets or exceeds EN61326-1 (Criteria A)  
for ESD: 8kV / 6kV, RFI: 10V / m, EFT: 2kV, Lightning  
Surge: 2kV / 1kV, Cond: 10 Vrms, Mag: 100A / m

### Pressure Equipment Directive (PED)

Devices with a permissible pressure  $PS \leq 200$  bar (20 MPa) conform to sec. 3 para. (3) and have not been tested for conformity. The devices have been constructed and manufactured according to sound engineering practice (SEP). The CE mark on the device does not apply for the Pressure Equipment Directive. The rating plate contains the following identification codes: PED:SEP.

### Humidity

#### Relative humidity

Up to 100%

### Condensation, icing

Permissible

### Vibration resistance

Acceleration up to 2 g at frequencies of up to 1,000 Hz (according to IEC 60068-2-6).

### Vibration effect

Peak Error  $\pm .3$  inH<sub>2</sub>O ( $\pm 0.74$  mbar) at 2G maximum) according to IEC 61298-3

### Shock resistance

Acceleration: 50 g; Duration: 11 ms (according to IEC 60068-2-27).

### Humid and dusty atmospheres (degree of protection)

The transmitter is dust and sand-proof and protected against immersion effects as defined by EN 60529 (1989) to IP 67, by NEMA to 4X, or by JIS C0920.

### Hazardous atmospheres

With or without integrated digital display.

# Model 266JSH/JST MODBUS® Multivariable

---

## Ex Explosion protection aspects (Europe and International)

According to ATEX Directive (European Directive 94 / 9 / EC of March 23, 1994) and applicable European standards which assure compliance with essential safety requirements, i.e. ratings apply to transmitters with or without integrated digital display.

- EN 60079-0 (Electrical equipment for explosive atmospheres – General requirements)
- EN 60079-1 (Equipment protection by flameproof enclosures “d”)
- EN 60079-15 (Electrical equipment for explosive gas atmospheres – Part 15: Construction, test and marking of type of protection “n”)
- EN 60079-26 (Equipment with equipment protection level (EPL) – Ga)
- EN 61241-0 (Electrical equipment for combustible dust atmospheres – General requirements)
- EN 61241-1 (Protection by enclosures “tD”)

---

## Type of protection: “Ex d” Certifications ATEX (Code E2) and IECEx (Code E9)

The transmitters are certified for the following groups, categories, and media in dangerous atmosphere, temperature classes, and types of protection.

a) Rating: ATEX II 1 / 2 G Ex d IIC T6 and ATEX II 1 / 2 D Ex tD A21  
IP67 T85 °C Ta = -50 °C to +75 °C

FM Approvals Certificate: FM09ATEX0023X, The meaning of the ATEX specific code is as follows:

- II: Equipment Group for hazardous surface areas (not mines)
- 1 / 2: Category – This means the transmitter is suitable for use in the partition to category 1 (eg, sensor category 1 / transmitter category 2).
- G: Gas (dangerous media)
- D: Dust (dangerous media)

---

## The number printed by the CE mark on the safety label identifies the notified body which has responsibility for the surveillance of the production.

The rest of the code relates to the degree of protection according to the relevant EN standards and is as described under the IECEx certificates.

b) Rating IECEx Ex d IIC T6 and IECEx Ex tD A21 IP67 T85 °C,  
Ta = -50 °C to +75 °C

FM Approvals Certificate: IECEx FME 09.0002X, The meaning of the rating code for IECEx (and ATEX) is as follows:

- Ex d: Flame-proof enclosure
- IIC: Explosion group gases
- T6: Temperature class of the transmitter (corresponds to 85 °C maximum) with an ambient temperature from -50 to 75 °C.
- Ex tD: Dust protected flame-proof enclosure
- A21: Dust intended zone of installation
- T85 °C: Maximum surface temperature of the transmitter housing at an ambient temperature Ta from -50 °C to +75 °C for dust (not for gas) with a dust layer up to 50 mm thick

---

## Type of protection: “Ex n” Certification ATEX (Code E3) and IECEx (Code ER)

a) Rating: ATEX II 3 G Ex nA IIC T4 / T5 / T6 (T4 for Ta= -50 °C to +85 °C), (T5 and T6 for Ta = -50 °C to +40 °C) IP67 and ATEX II 3 D Ex tD A22  
IP67 T85 °C Ta = -50 °C to +75 °C

**Electrical Data:** U = 30 Vdc, I = 25mA, C = 17nF, L = 0.22mH

FM Approvals Certificate: FM09ATEX0025X, The meaning of the ATEX specific code is as follows:

- II: Equipment Group for hazardous surface areas (not mines)
- 3: Category of equipment protection.
- G: Gas (dangerous media)
- D: Dust (dangerous media)
- T4: Temperature class of the transmitter (which corresponds to 135 °C Max) with Ta= -50 °C to +85 °C
- T5: Temperature class of the transmitter (which corresponds to 100 °C Max) with Ta= -50 °C to +40 °C
- T6: Temperature class of the transmitter (which corresponds to 85 °C Max) with Ta= -50 °C to +40 °C

The number printed by the CE mark on the safety label identifies the Notified Body which has responsibility for the surveillance of the production.

The rest of the code relates to the degree of protection according to the relevant EN standards and is as described under the IECEx certificates.

b) Rating: IECEx Ex nA IIC T6, Ta = -50 °C to +85 °C and IECEx Ex tD A22  
IP67 T85 °C, Ta = -50 °C to +75 °C

FM Approvals Certificate: IECEx FME09.0004X, The meaning of the rating code for IECEx (and ATEX) is as follows:

- Ex nA: Non-sparking
- IIC: Explosion group gases
- T6: Temperature class of the transmitter (corresponds to 85 °C maximum) with an ambient temperature from -50 to 85 °C.
- Ex tD: Dust protected flame-proof enclosure
- A22: Dust Intended Zone of Installation
- T85 °C: Maximum surface temperature of the transmitter housing at an ambient temperature Ta from -50 °C to +75 °C for dust (not for gas) with a dust layer up to 50 mm thick

---

**NOTE:** When installed, power must be supplied to this transmitter by a voltage limiting device which will prevent the rated voltage of 30 Vdc being exceeded.

---



---

**Ex protection aspects (North America)**

According to Factory Mutual standards for the assurance of fundamental safety requirements in the United States of America. Ratings apply to transmitters with or without integrated digital display.

- FM 3600: Electrical Equipment for use in Hazardous (Classified) Locations, General Requirements.
- FM 3611: Non-incendive electrical equipment for use in Class I and II, Division 2 and Class III Division 1 and 2 Hazardous (Classified) Locations.
- FM 3615: Explosion-proof Electrical Equipment.
- FM 3810: Electrical and Electronic Test, Measuring and Process Control Equipment.
- NEMA 250: Enclosure for Electrical Equipment (1000 Volts Maximum)

---

**According to CSA standards for the assurance of fundamental safety requirements in Canada.**

- CSA-C22.2 No 142-M1987: Process Control Equipment, General Requirements.
- CSA-C22.2 No 213-M1987: Non-incendive Electrical Equipment for Use in Class I, Division 2 Hazardous Locations.
- CSA-C22.2 No 30: Explosion-proof Enclosures for Use in Class I, Hazardous Locations.
- CSA-C22.2 No 25: Enclosures for Use in Class II Groups E, F, and G Hazardous Locations.
- CSA-C22.2 No 94-M91: Special Purpose Enclosures
- ANSI / ISA 12.27.01: Requirements for Process Sealing Electrical Systems

---

**United States and Canada "Explosion-proof" Certification (Code EB)**

The 266 Transmitters have FM certification for the following hazardous location protections:

- Explosion-proof (US): Class I, Division 1, Groups A, B, C, and D, T5 for Ta = -50 °C to +85 °C
  - Flame-proof (US): Class I, Zone 1, AEx d, IIC, T4 for Ta = -50 °C to +85 °C
  - Explosion-proof (Canada): Class I, Division 1, Groups B, C, and D, T5 for Ta = -50 °C to +85 °C
  - Flame-proof (Canada): Class I, Zone 1, Ex d, IIC, T4 for Ta = -50 °C to +85 °C
  - Dust Ignition-proof (US & Canada): Class II, III Division 1, Groups E, F, and G, T5 for Ta = -50 °C to +85 °C
  - Environmental enclosure rating: Type 4X
- 

---

**United States and Canada "Non-incendive" Certification (Code EC)**

The 266 Transmitters have FM certification for the following hazardous location protections.

- Non-incendive (US & Canada): Class I, Division 2, Groups A, B, C, & D, T\* in accordance with Non-incendive fielding wiring requirements for hazardous (classified) locations per Control Drawing DH3173.
- Non-sparking (US & Canada): Class I, Zone 2, (A)Ex nA IIC T\* in accordance with non-incendive field wiring requirements for hazardous (classified) locations per Control Drawing DH3173.

T\*: Temperature class is dependent on the maximum input current and the maximum ambient temperature per this table. Refer to certificates for ratings.

---

T Class	Minimum ambient °C	Maximum ambient °C	Imax mA	Power W
T4	-50 °C	+85 °C	100	0.75
T4	-50 °C	+70 °C	160	1
T5	-50 °C	+40 °C	100	1.75
T6	-50 °C	+40 °C	50	0.4

---

---

**Type 4X applications indoors / outdoors**

For correct installation in field of 266 pressure transmitters please see the related control drawing.

"Dual Seal" per ANSI / ISA 12.27.01 as indicated.

The temperature sensor circuit (Pt100) must be connected in accordance with the requirements of the Ex certificate.

---

At ambient temperatures of -40 °F to 185 °F (-40 °C to 85 °C), the specifications relating to the temperature classes on the relevant certificates must be observed.

# Model 266JSH/JST MODBUS® Multivariable

## Electrical data and options

### Power supply

The transmitter operates from 10.5 ... 30 VDC and is protected against reversed polarity.

### Ripple

Maximum 40 mV RMS

### Displays (optional)

#### Integrated LCD display (code L1)

- Wide-screen LCD display, 128 x 64 pixels, 2.06 in x 1.07 in (52.5 mm x 27.2 mm) dot matrix
- Multi-language
- Four keys for device configuration and management
- Easy setup for quick commissioning
- Customized visualizations which the user can select

The LCD display can also be used to show static pressure, differential pressure, flowing temperature, sensor temperature, and diagnostics messages, as well as make configuration settings.

#### Integrated LCD display with TTG operation (code L5)

As with the integrated LCD display above, but featuring an innovative TTG (through-the-glass) keypad which can be used to activate the device's configuration and management menus without having to remove the transmitter housing cover. The TTG keys are protected against accidental activation.



Fig. 2: Integrated LCD display with TTG operation

### Surge protection

The 266 Modbus® multivariable comes standard with a surge / transient suppression scheme build into the termination block.

### Up to 4 kV

- Voltage: 1.2  $\mu$ s rise time / 50  $\mu$ s delay time at half value

### Output signal

2-wire Half Duplex, RS485 Modbus® communications. Updates are 1 per second. Differential Pressure, Static Pressure, Flowing Temperature and Diagnostics are examples of available 1 second data.

- Current: 8  $\mu$ s rise time / 20  $\mu$ s delay time at half value

## Configuration

Transmitters are calibrated at the factory to standard ranges. Optionally, they may be calibrated to the customer's specified measuring range. Accuracy specifications may vary for custom factory calibrated ranges.

### The following data will be shown on the tag plates:

- Manufacturer location
- Serial number
- Product code (model number)
- Hardware revision
- Manufacture date
- PED: SEP
- Description of device "RS485 Modbus"
- Special request if applicable
- DP upper range limit (FCS)
- DP lower range limit
- DP span limits
- SP range
- Max. working pressure
- SP span limits
- Diaphragm & fluid
- Flange material & gaskets
- Power supply: 10.5 -30 Vdc
- Ambient temp. (TS) -40 to 85 °C
- Factory calibrated range: (DP and SP)

# Model 266JSH/JST MODBUS® Multivariable

## Measuring accuracy

Measuring Reference conditions for accuracy specifications are:

- Temperature at Factory Calibration: 20 °C ± 5 °C
- Relative Humidity: 40% to 70%
- Barometric Pressure: 0.9862 Bar to 1.013 Bar Silicon Oil

Some performance referring to the FCS are affected by the actual range down as ratio between FCS and calibrated span.

It is recommended to select the transmitter sensor code providing the lowest possible range down (TD) ratio to optimize performance characteristics.

## Dynamic response (according to IEC 61298-1)

Sensors	Time constant (63.2% of total step response)
Sensors 1,2	150 ms
Sensors 5, 6, 7	150 ms
266JXX: Reaction time for all sensors	70 ms

Response time (total) = reaction time + time constant

## Measuring error

% of calibrated span, consisting of terminal-based non-linearity, hysteresis, and non-repeatability.

Model	Sensor	For range down	Measuring error
266JSH	1, 2	From 1:1 to 10:1	± 0.075%
		From 10:1 to 100:1	± (0.075 + 0.005 x TD - 0.05)%
	5,6,7	From 1:1 to 10:1	± 0.075%
		From 19:1 to 25:1	± (0.075 + 0.005 x TD - 0.05)%
266JST	1, 2	From 1:1 to 10:1	± 0.04%
		From 10:1 to 100:1	± (0.04 + 0.002 x TD - 0.02)%
	5,6,7	From 1:1 to 10:1	± 0.05%
		From 10:1 to 25:1	± (0.05 + 0.004 x TD - 0.04)%

## Example of error

Range down on absolute sensor will be added to barometric measurement as:

- FCS = 1500 psia
- TD = 20:1
- New upper range value (URV) = 75 + barometric pressure

Model	Process temperature measurement (Pt100) in acc. with IEC 60751	Measurement Only. Does not include probe errors
266JSH	-54 °F (-48 °C) to 765 °F (407 °C)	± 0.27 °F Typical
266JST		± 0.65 °F Maximum

## Ambient temperature

### Differential and Absolute pressure sensor

Ambient temperature effect over the temperature range of -35 °F (-37.2 °C) to 185 °F (85°C).

Model	DP sensor	For range down	Measuring error
266JST	1, 2	From 1:1 to 10:1	± (0.04% FCS + 0.02% of reading)
		≥10:1 ≤50:1	± (0.04% FCS + 0.02% of Measurement Span)
266JST	5, 6, 7	From 1:1 to 10:1	± (0.04% FCS + 0.02% of Measurement Span)
		≥10:1 ≤25:1	± (0.04% FCS + 0.02% of Measurement Span)

### Static pressure effect (SPE) to Differential

(zero signal errors may be calibrated out at operating pressure)

Measuring range	Sensors 1, 2 (250 inH2O, 800 inH2O)
DP Zero error	Up to 1450 psi (100 bar): 0.01% of FCS
	> 1450 psi (100 bar): 0.01% of FCS per 1450 psi (100 bar)
DP Span error	Up to 1450 psi (100 bar): 0.02% of reading
	> 1450 psi (100 bar): 0.02% of reading per 1450 psi (100 bar)

### Mounting position

No effect for rotation on diaphragm plane. A tilt up to 90° from vertical causes a zero shift up to 0.35 kPa, 3.5 mbar or 1.4 inH2O, which can be corrected with zero adjustment. No span effect.

### Long-term stability

Sensors 1, 2 and 5, 6, 7:

± 0.15% of FCS over a period of 24 months

## Total performance

For differential and or static pressure measurement.

Within an ambient temperature change range of -10 to 60 °C (14 to 140 °F), up to 10 MPa, 100 bar, 1,450 psi static pressure.

Model	Sensor	For range down	Total performance (DP)
266JSH	1, 2	1:1	± 0.075% of calibrated span
266JST	5, 6, 7	1:1	± 0.091% of calibrated span

The total performance includes the measuring error (non-linearity including hysteresis and non-repeatability) and the thermal change in the ambient temperature as regards the zero signal and measuring span.

For the DP Equation the effects of the static pressure on the DP zero signal and DP measuring span must also be included.

$$E_{\text{perf}} = \sqrt{(E_{\Delta TZ} + E_{\Delta TS})^2 + E_{\Delta PZ}^2 + E_{\Delta PS}^2 + E_{\text{lin}}^2}$$

$E_{\text{perf}}$  = Total performance

$E_{\Delta TZ}$  = Effect of the ambient temperature on the zero signal

$E_{\Delta TS}$  = Effect of the ambient temperature on the measuring span

$E_{\Delta PZ}$  = Effect of the static pressure on the zero signal

$E_{\Delta PS}$  = Effect of the static pressure on the measuring span

$E_{\text{lin}}$  = Measuring error

$$\text{SP } E_{\text{perf}} = \sqrt{(E_{\Delta TZ} + E_{\Delta TS})^2 + E_{\text{lin}}^2}$$

For total performance of the measurement system (AP & DP) the equation becomes:

$$E_{\text{total}} = \sqrt{E_{\text{DP}}^2 + E_{\text{AP}}^2}$$

$$E_{\text{total}} = \sqrt{0.075^2 + 0.091^2}$$

$$E_{\text{total}} = 0.12\%$$

# Model 266JSH/JST MODBUS® Multivariable

## Technical specification

Please refer to the order information to check the availability of different versions of the relevant model.

### Materials

#### Process separation diaphragms<sup>1</sup>

Stainless steel 1.4435 (AISI 316L);  
Hastelloy C276

#### Process flanges, adapters, screw plugs, and vent / drain valves<sup>1</sup>

Stainless steel 1.4404 / 1.4408 (AISI 316L)

#### Sensor filling fluid

Silicone oil, fluorocarbon (Galden)

#### Mounting bracket<sup>2</sup>

Aluminum

#### Gaskets<sup>1</sup>

Viton (FPM); Buna (NBR); EPDM; PTFE

#### Sensor housing

Stainless steel 1.4404 (AISI 316L)

#### Screws and nuts

Screws and nuts made from stainless steel AISI 316, class A4-70 as per UNI 7323 (ISO 3506) in compliance with NACE MR0175 Class II

#### Electronics housing and cover

Aluminum alloy (copper content  $\leq 0.3\%$ ) with baked epoxy finish (color: RAL 9002); stainless steel AISI 316L.

#### O-ring cover

Buna N (Perbunan)

#### Plates

Stainless steel AISI 316 for transmitter name plate, certification plate, optional measuring point tag plate / settings plate attached to electronics housing, and optional tag plate with customer data. All plates laser-labeled.

#### Calibration

##### Standard

- 0 to measuring range upper limit (SP)
- Barometric to measuring range upper limit (SP)
- -40 °F (-40 °C) to 212 °F (100 °C) Process Temperature
- -40 °F (-40 °C) to 185 °F (85 °C) Ambient Temperature

##### Optional

- To specified measuring span for DP and SP

#### Surge and transient protection

The transmitter is equipped standard with a transient suppressor scheme on the termination block.

<sup>1</sup> Transmitter parts that come into contact with fluid

<sup>2</sup> U-bolt material: stainless steel AISI 400;

screw material: high-strength alloy steel or stainless steel AISI 316

### Optional extras

#### Mounting bracket

For vertical and horizontal 60 mm (2 in.) pipes or wall mounting

#### LCD display

Can be rotated in 90° increments into 4 positions

#### Certificates (test, design, characteristics, material traceability)

#### Operating instruction language

#### Process connections

Flanges: ¼-18 NPT on the process axis

Adapters: ½-14 NPT on the process axis

Center distance: 54 mm (2.13 in.) between flanges; 51 mm, 54 mm, or 57 mm (2.01 in., 2.13 in., or 2.24 in.) between adapters.

Fastening screw threads: 7/16–20 UNF with 41.3 mm center distance.

#### Packaging

Carton with dimensions of approximately 11 x 9 x 9 in (28 x 23 x 24 cm)

#### Electrical connections

Two ½-14 NPT or M20 x 1.5 threaded bores for conduit or cable glands, directly on housing.

#### Terminals

Terminals are sized for wire cross sections of up to 2.5 mm<sup>2</sup> (14 AWG), Two terminals for power (+) and (-), Two terminals for RS485 communications (+) and (-), Four terminals for a Pt100 resistance temperature detector (RTD) with 4-wire technology.

#### Grounding

Internal and external ground terminals are provided for 4 mm<sup>2</sup> (10 AWG) wire cross sections.

#### Mounting position

The transmitters can be installed in any position. The electronic housing can be rotated into any position. A stop is provided to prevent overturning.

#### Weight (without options)

Approximately 8.4 lb (3.8 kg); add 3.3 lb (1.5 kg) for housing made from stainless steel. Add 1.5 lb (650 g) for packaging.

# Model 266JSH/JST MODBUS® Multivariable

## Mounting dimensions

(not design data) – dimensions in mm (inch)

### Transmitter with barrel housing – Horizontal flanges

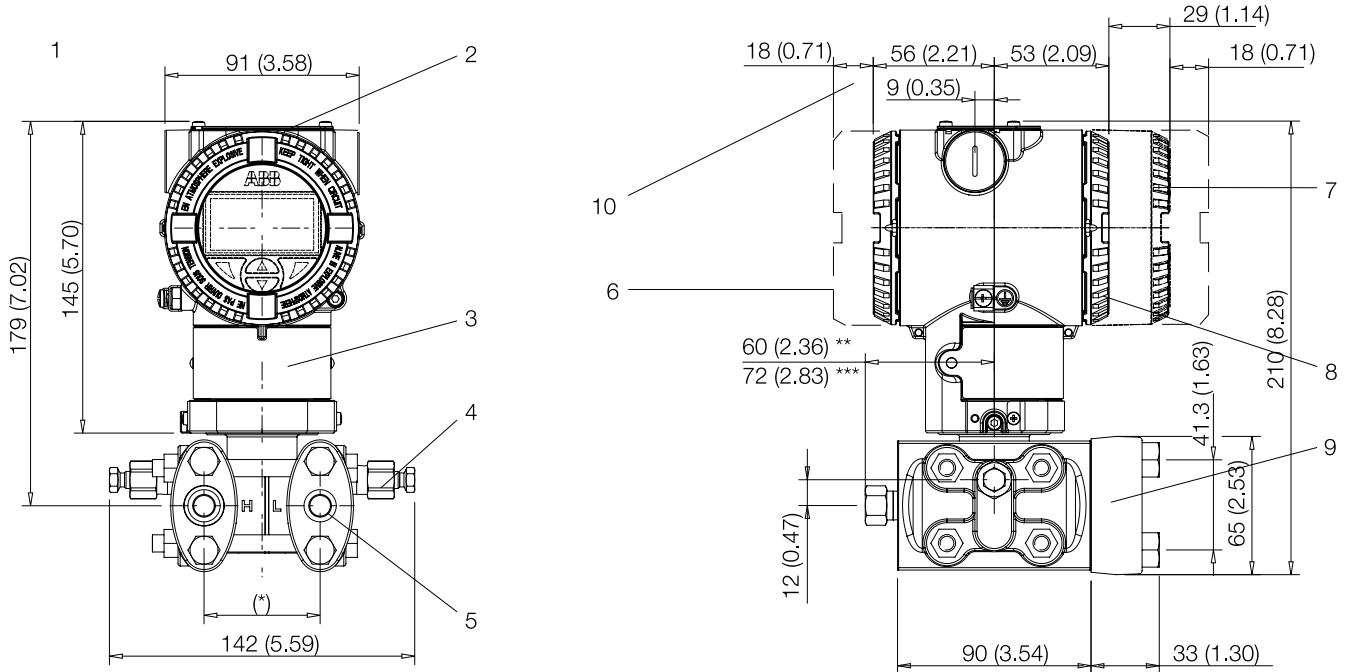


Fig. 3: Barrel housing – Horizontal flanges

1 Settings | 2 Name plate | 3 Certification plate | 4 Vent / drain valve | 5 Process connection |  
6 Terminal side | 7 LCD display housing cover | 8 Electronics side | 9 Process flange adapter | 10 Space for removing the cover

\* 54 (2.13) mm (in.) via ¼ – 18 NPT process flanges

51 (2.01), 54 (2.13), or 57 (2.24) mm (in) via ½ – 14 NPT adapter flanges.

Note: Process connection and gasket groove comply with IEC 61518. Thread for attaching adapter flanges or other components (e.g., manifold) to process flange: 7/16 -20 UNF.

\*\* With screw plug

\*\*\* With vent / drain valve



### Transmitter with barrel housing – Vertical flanges

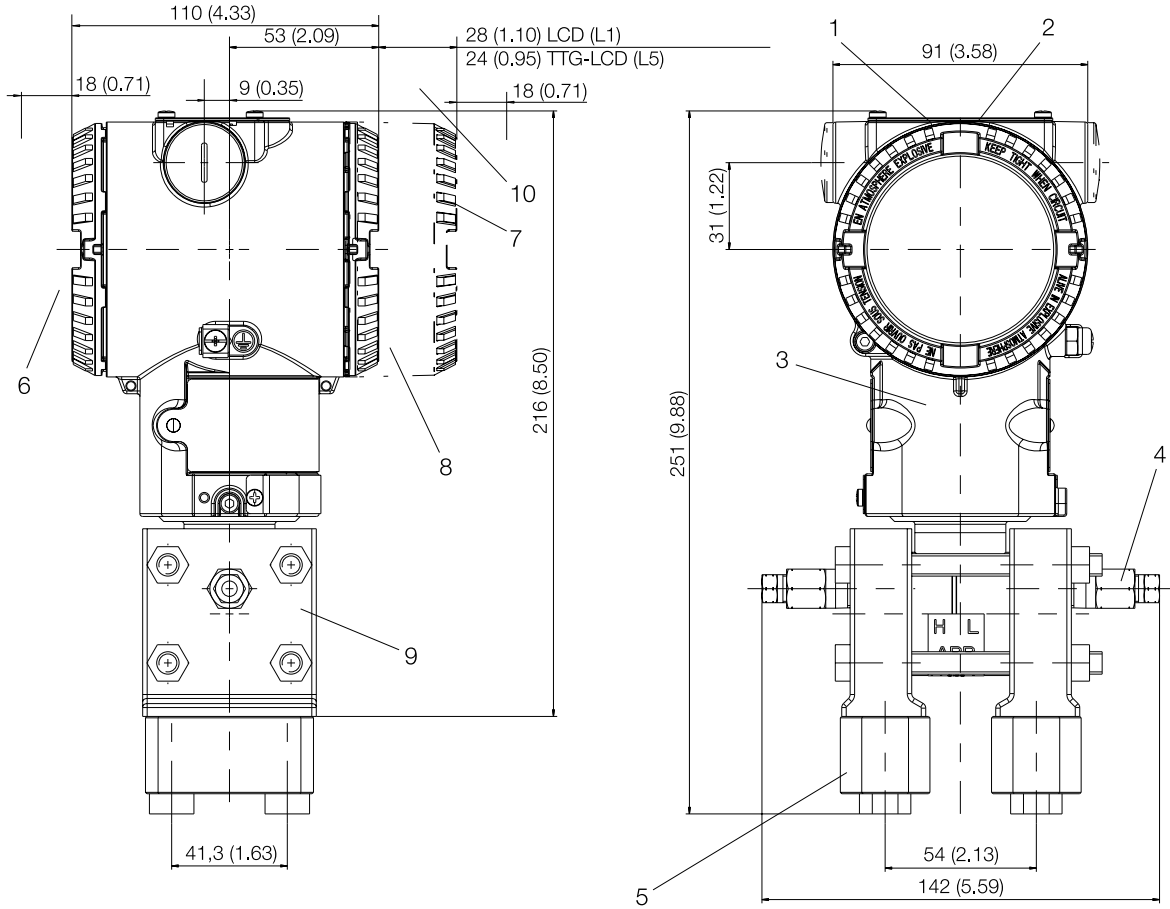


Fig. 4: Barrel housing – Vertical flanges

1 Settings | 2 Name plate | 3 Certification plate | 4 Vent / drain valve | 5 Process connection |  
 6 Terminal side | 7 LCD display housing cover | 8 Electronics side | 9 Process flange adapter | 10 Space for removing the cover

# Model 266JSH/JST MODBUS® Multivariable

Transmitter with mounting bracket, for vertical or horizontal mounting on 60 mm (2 in.) pipe

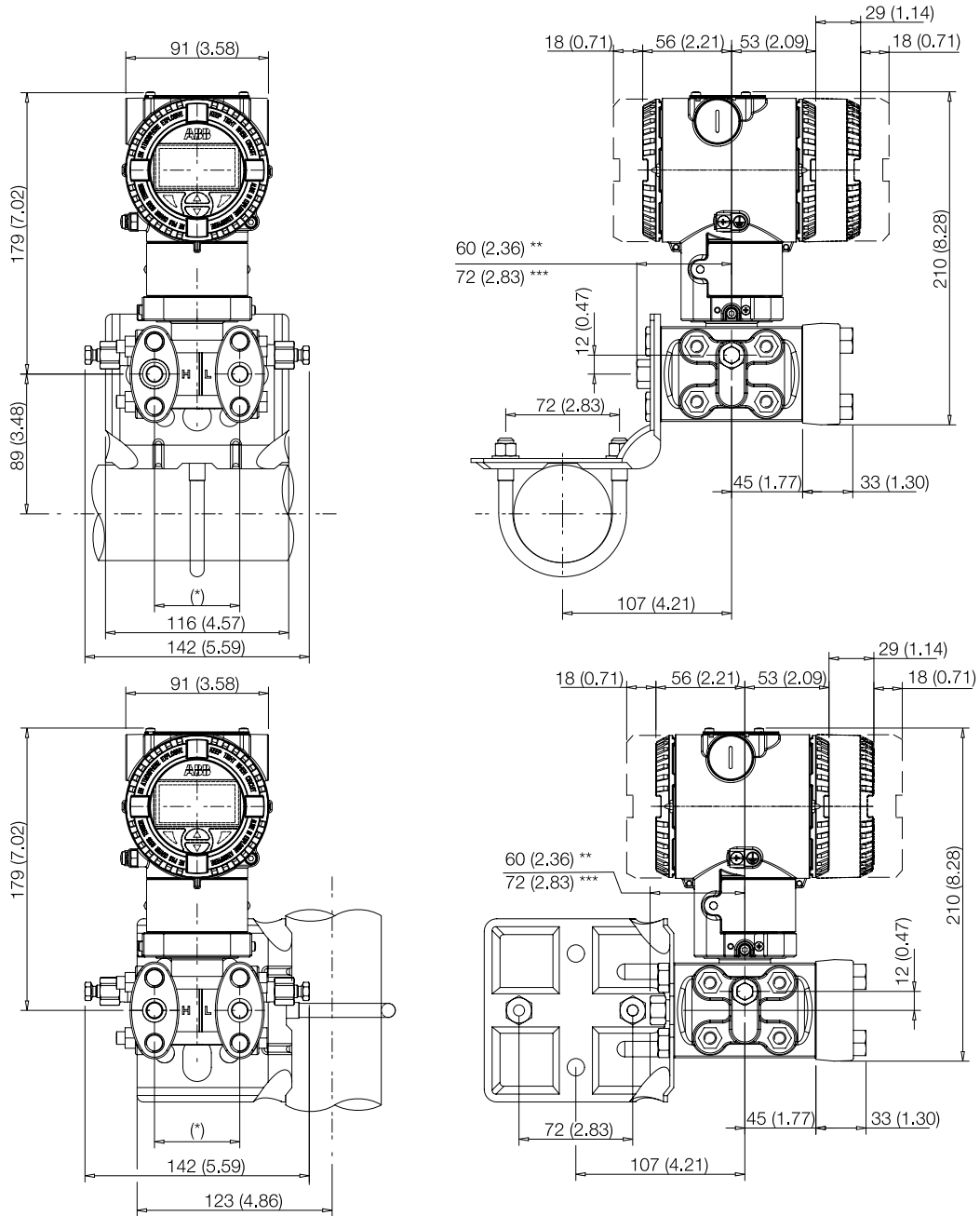


Fig. 5: Pipe mounting – Barrel housing

- \* 54 (2.13) mm (in.) via 1/4 - 18 NPT process flanges
- 51 (2.01), 54 (2.13), or 57 (2.24) mm (in) via 1/2 - 14 NPT adapter flanges.
- Note: Process connection and gasket groove comply with IEC 61518. Thread for attaching adapter flanges or other components (e.g., manifold) to process flange: 7/16 - 20 UNF.
- \*\* With screw plug
- \*\*\* With vent / drain valve

Transmitter with flat bracket, for vertical or horizontal mounting on 60 mm (2 in.) pipe

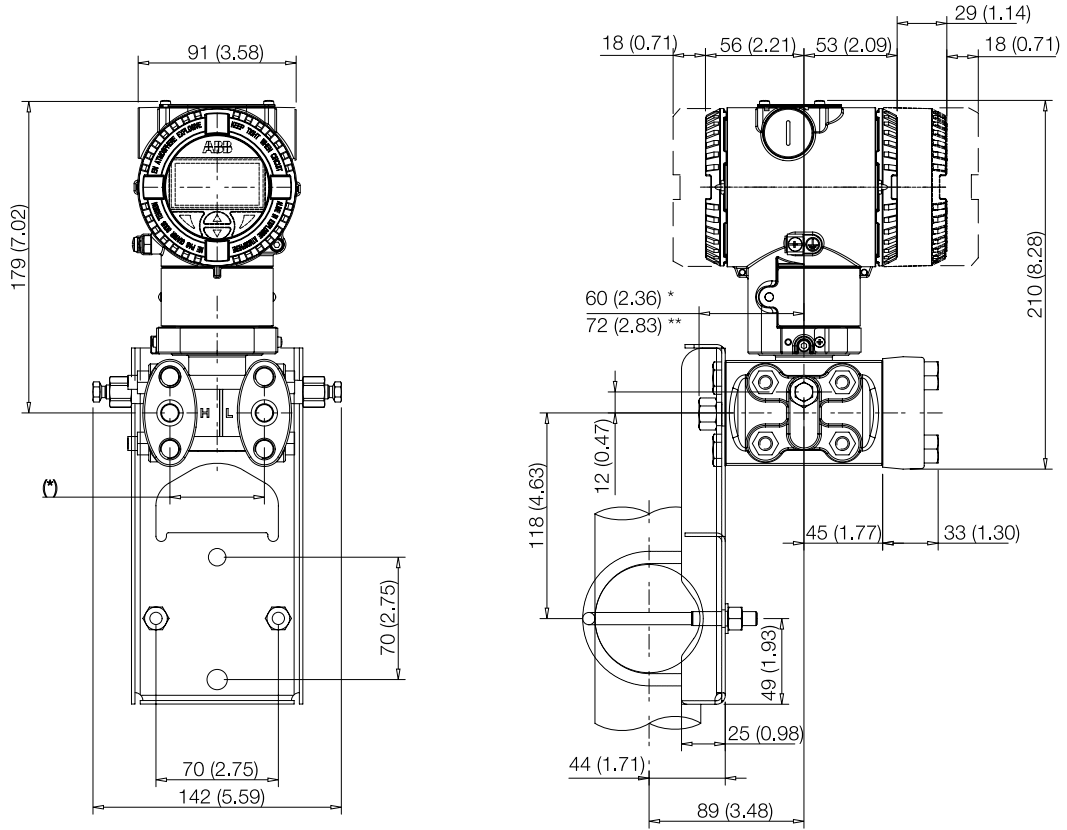


Fig. 6: Flat bracket for pipe mounting – Barrel housing

\* With screw plug  
 \*\* With vent / drain valve

# Model 266JSH/JST MODBUS® Multivariable

## Ordering information

Basic ordering information model 266JSH/JST multivariable transmitter, for differential pressure, absolute pressure, and temperature measurement.

Select one character or set of characters from each category and specify complete catalog number.

Refer to additional ordering information and specify one or more codes for each transmitter if additional options are required.

Base model – 1st to 6th characters			266JSH/JST	e	f	g	h	r	s	t
Multivariable transmitter, for differential, absolute pressure and temperature JST base accuracy: DP 0.04%; SP 0.05% (JSH is not currently available)										
DP Sensor span limits – 7th character										
<b>Kilopascals (kPa)</b>	<b>Millibars (mbar)</b>	<b>Inches of water (H2O)</b>								
0.622722 to 62.2722	6.22722 to 622.722	2.5 to 250		1						
1.992710 to 199.271	19.9271 to 1992.71	8.0 to 800		2						
SP Maximum working pressure (with sensor span limits codes 1-2) – 8th character										
<b>Megapascals</b>	<b>Bars</b>	<b>Pounds / square inch (psi)</b>								
0 and 3.44738	0 and 34.4738	0 and 500		5						
0 and 10.3421	0 and 103.421	0 and 1500		6						
0 and 120.684	0 and 206.843	0 and 3000 (not available with e1)		7						
Diaphragm material and fill fluid – 9th character										
<b>Diaphragm material</b>	<b>Fill fluid</b>									
Hastelloy C-276	Silicone oil					K				
Process flanges, adapters material, and connections – 10th character										
<b>Process flanges</b>	<b>Adapters Material</b>	<b>Connection</b>								
AISI 316L SST (1.4404 / 1.4408)	¼-18 NPT female direct	Horizontal connection	NACE				A			
AISI 316L SST (1.4404 / 1.4408)	¼-18 NPT female direct	Vertical connection	NACE				Q			
Bolts and gaskets material – 11th character										
<b>Bolts material</b>	<b>Gaskets material</b>									
AISI 316L SST	Viton	Note 1	NACE: non-exposed					3		
AISI 316L SST	PTFE	Max. 25 MPa / 250 bar / 3625 psi	NACE: non-exposed					4		
AISI 316L SST	EPDM		NACE: non-exposed					5		
Housing material and electrical connections – 12th character										
<b>Electronic Housing material</b>	<b>Electrical connection</b>									
Aluminum alloy (Barrel type)	½-14 NPT								A	
Aluminum alloy (Barrel type)	M20 x 1.5								B	
AISI 316L SST (Barrel type)	½-14 NPT								S	
AISI 316L SST (Barrel type)	M20 x 1.5								T	
Output – 13th character										
Modbus® RS485	with options									5

		266JSH/JST	zv	ze	zl	zb	zm	zt	zi
<b>Vent and drain valve material and position – 14th &amp; 15th characters</b>									
<b>Vent and drain valve material</b>	<b>Position</b>								
No Selection	No Selection		NO						
AISI 316L SST (1.4404)	On process axis	NACE	V1						
AISI 316L SST (1.4404)	On flanges side top	NACE	V2						
AISI 316L SST (1.4404)	On flanges side bottom	NACE	V3						
<b>Explosion protection certification – 16th &amp; 17th characters</b>									
No Selection			NO						
ATEX Group II, Category 1/2 GD – Ex d		E2 and E9 use same marking	E2						
ATEX Group II, Category 3 GD – Ex nA		E3 and ER use same marking	E3						
FM (USA/Canada) XP/Ex d (Explosion-proof) or NI/Ex nA (Non-Incendive)		Class I, Div 1 or Div 2	ET						
IEC Ex II, Category 1/2 GD – Ex d		E2 and E9 Use same marking	E9						
IEC Ex II, Category 3 GD – Ex nA		E3 and ER use same marking	ER						
<b>Integral LCD – 18th &amp; 19th characters</b>									
Without display				NO					
With integral LCD display				L1					
<b>Mounting bracket shape and material – 20th &amp; 21st characters</b>									
<b>Mounting bracket shape</b>	<b>Material</b>								
No selection	No selection				NO				
For pipe mounting	AISI 316 SST (1.4401)	Not suitable for AISI housing			B2				
For pipe mounting	Aluminum				B8				
<b>Operating instruction language – 22nd &amp; 23rd characters</b>									
English							M5		
<b>Label and tag language – 24th &amp; 25th characters</b>									
English								NO	
<b>Additional tag plate – 26th &amp; 27th characters</b>									
No selection									NO

# Model 266JSH/JST MODBUS® Multivariable

## Ordering information continued

	266JSH/JST	zn	zp	zc	zh	zu	za
<b>Configuration – 28th &amp; 29th characters</b>							
No selection		NO					
<b>Preparation procedure – 30th &amp; 31st characters</b>							
No selection			NO				
<b>Certificates – 32nd &amp; 33rd characters</b>							
Inspection certificate 3.1 acc. EN 10204 of calibration				C1			
Inspection certificate 3.1 acc. EN 10204 of pressure test				C5			
Declaration of compliance with the order 2.1 acc. EN 10204 for instrument design				C6			
Separate calibration record				CC			
Printed record of configured data of transmitter				CG			
<b>Material traceability – 34th &amp; 35th characters</b>							
No selection					NO		
Certificate of compliance with the order 2.1 acc. EN 10204 for process wetted parts					H1		
Inspection certificate 3.1 acc. EN 10204 of pressure-bearing and process wetted parts with analysis certificates as material verification					H3		
Material certificate 2.2 acc. EN 10204 of the pressure bearing and process wetted parts					H4		
<b>Connector – 36th &amp; 37th characters</b>							
No selection						NO	
AISI SST cable gland ½ NPT						UA	
AISI SST cable gland ½ MV20						UC	
<b>Housing accessories – 38th &amp; 39th characters</b>							
No selection	Note 2						NO

Note 1: Suitable for oxygen service

Note 2: Minor parts with factory certificate acc. to EN 10204

## Standard delivery scope

Changes possible with additional ordering code.

- Adapters supplied loose
- Surge and transient terminal block is standard
- Sealing plugs for horizontal connection flanges on the process axis
- Sealing plugs not included for vertical connection flanges
- No vent / drain valves
- Hastelloy Diaphragms – Silicone Oil
- EDPM Flange Seals
- For standard applications (without explosion protection)
- No display, no mounting bracket
- English short operating instructions and English labeling
- Configuration with Bar / Mbar and °C units
- Standard Calibration Certificate
- No test, inspection, or material certificates

## Important remark for all models

The selection of suitable wetted parts and filling fluid for compatibility with the process media is a customer's responsibility, if not otherwise notified before manufacturing.

### NACE compliance information

1. The materials of constructions comply with metallurgical recommendations of NACE MR0175/ISO 15156 for sour oil field production environments. As specific environmental limits may apply to certain materials, please consult latest standard for further details. Materials AISI 316 / AISI 316L, Hastelloy C-276, Monel 400 also conform to NACE MR0103 for sour refining environments.
2. NACE MR0175 addresses bolting requirements in two classes:
  - Exposed bolts: bolts directly exposed to the sour environment or buried, encapsulated or anyway not exposed to atmosphere.
  - Non exposed bolts: the bolting must not be directly exposed to sour environments, and must be directly exposed to the atmosphere at all times.

266JSH, 266JST bolting identified by "NACE" are in compliance to the requirements of NACE MR0175 when considered "non exposed bolting."

# Contact us

## **ABB Inc.**

### **Upstream Oil & Gas Solutions**

Quotes: [totalflow.inquiry@us.abb.com](mailto:totalflow.inquiry@us.abb.com)

Orders: [totalflow.order@us.abb.com](mailto:totalflow.order@us.abb.com)

Training: [totalflow.training@us.abb.com](mailto:totalflow.training@us.abb.com)

Support: [totalflowsupport@us.abb.com](mailto:totalflowsupport@us.abb.com)  
+1 800 442 3097 (opt. 2)

## **Oklahoma Office**

7051 Industrial Boulevard

Bartlesville, OK 74006

Ph: +1 918 338 4888

+1 800 442 3097 (US only)

## **California Office**

4300 Stine Road, Suite 405-407

Bakersfield, CA 93313

Ph: +1 661 833 2030

## **Kansas Office**

2705 Centennial Boulevard

Liberal, KS 67901

Ph: +1 620 626 4350

## **Texas Offices**

3700 West Sam Houston

Parkway South, Suite 600

Houston, TX 77042

Ph: +1 713 587 8000

8007 East Business 20

Odessa, TX 79765

Ph: +1 432 272 1173

150 Eagle Ford Road

Pleasanton, TX 78064

Ph: +1 830 569 8062

[www.abb.com/upstream](http://www.abb.com/upstream)

## **Note**

We reserve the right to make technical changes or modify the contents of this document without prior notice. With regard to purchase orders, the agreed particulars shall prevail. ABB does not accept any responsibility whatsoever for potential errors or possible lack of information in this document.

We reserve all rights in this document and in the subject matter and illustrations contained therein. Any reproduction, disclosure to third parties or utilization of its contents – in whole or in parts – is forbidden without prior written consent of ABB.

Copyright © 2017 ABB Inc.  
All rights reserved



Product  
webpage